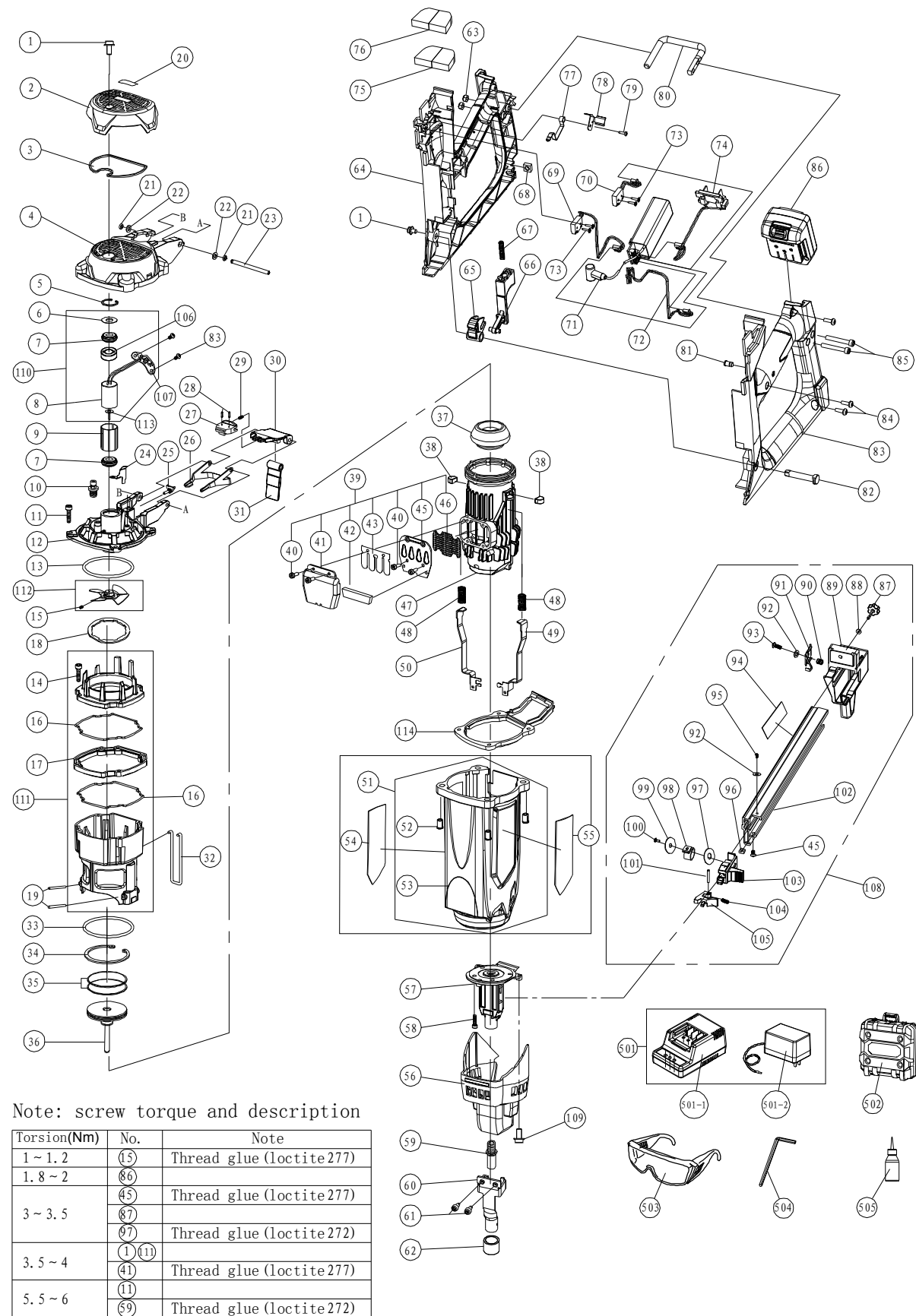


EXPLODED DRAWING AND PARTS LIST

GAS CONCRETE NAILER

MODEL: GSN40B-30 GSN40B-40

2016.06.07



Note: screw torque and description

Torsion(Nm)	No.	Note
1 ~ 1.2	(15)	Thread glue (loctite277)
1.8 ~ 2	(86)	Thread glue (loctite277)
3 ~ 3.5	(45)	Thread glue (loctite277)
	(87)	Thread glue (loctite272)
3.5 ~ 4	(1)(11)	Thread glue (loctite277)
	(41)	Thread glue (loctite277)
5.5 ~ 6	(11)	Thread glue (loctite272)
	(69)	Thread glue (loctite272)

PART LIST

GSN40B-30/GSN40B-40

Note : ☆ consumable parts

No.	Parts Name	Qty	Remark
1	Hex Bolt M5×10	2	
2	Top Cover	1	
3	Filter	1	
4	Filter Cover	1	
5	Retaining Ring d0=24	1	
6	Gasket	1	
7	Rubber Gasket	2	
8	Motor Assembly	1	
9	Mount Sleeve	1	
10	Spark Plug	1	
11	Hex.Socket HD M5×25	4	
12	Cylinder Head	1	
13	O-Ring 59.92×3.53	1	☆
14	Hex.Socket HD M4×20	4	
15	Holding Screw M4×5	1	
16	Abnormity O-Ring	2	
17	Chamber intermediate pad	1	
18	Rubber Mat	1	
19	Parallel pin	1	
20	Top Name Plate	1	
21	O-Retaining Ring 3.5×2	2	
22	Washer d=5	2	
23	Shaft	1	
24	High Pressure Wire Platen	1	
25	Adapter	1	☆
26	Cell Lever	1	
27	Latch	1	
28	Spring Straining Pin 2×8	2	
29	Latch Spring	1	
30	Cell Cover	1	
31	Cell Rubber	1	
32	Lock Bar	1	
33	O-Ring 66.27×3.53	1	☆
34	Retaining Ring d0=58	1	
35	Piston Ring	2	☆
36	Piston Assembly	1	
37	Piston Bumper	1	
38	Chamber Stop Rubber	2	
39	Valve Assembly	1	
40	Hex.Sockeet HD M4×10	4	
41	Buffer Cover	1	
42	Muffler	1	
43	Lead Valve	1	
44	Read Plate	1	
45	Bolt M4×6	3	
46	Exhaust Baffle	1	
47	Cylinder	1	
48	Pushing Arm Spring	1	
49	Left Pushing Arm	1	
50	Right Pushing Arm	1	
51	Housing Assembly	1	
52	Nut M5	4	
53	Housing	1	
54	Name Plate	1	
55	Specification Plate	1	
56	Protect Cover	1	
57	Nail Seat	1	
58	Hex.Socket HD M5×15	4	
59	Nailer Mouth	1	
60	Pushing arm	1	
61	Hex Bolt	2	
62	Pushing arm jacket	1	

No.	Parts Name	Qty	Remark
63	Locknut	1	
64	Right Handle	1	
65	Lock block	1	
66	Trigger	1	
67	Trigger spring	1	
68	Square nut M6	1	
69	Electric fan switch assembly	1	
70	High Voltage switch assembly	1	
71	Electric controller assembly	1	
72	Motor Line assembly	1	
73	Screw ST2.2×11	4	
74	Power Line assembly	1	
75	Fuel cell sponge	1	
76	Tank block	1	
77	Switch spring	1	
78	Wiring cover	1	
79	Screw ST2.9×8	1	
80	Hook	1	
81	LED Light	1	
82	Rotating shaft	1	
83	Left Handle	1	
84	Countersunk Screw ST4.2×20	3	
85	Hex. Socket HD. Bolt M5×35	2	
86	Li-Ion Battery Pack	2	
87	Lock Bolt	1	
88	Washer d=6	1	
89	Short Fixed Block	1	GSN40B-30
89	Long Fixed Block	1	GSN40B-40
90	Catch Spring	1	
91	Catch	1	
92	Washer d=4	1	
93	Screw ST4.2×8	1	
94	Warning Lable	1	
95	Bolt M4×4	1	
96	Square Nut M4	1	
97	Ribbon Spring Gasket Down	1	
98	Ribbon Spring	1	☆
99	Ribbon Spring Gasket	1	
100	Fixed Stuff	1	☆
101	Parallel Pins 3×20	1	
102	Short Nail Magazine	1	GSN40B-30
102	Long Nail Magazine	1	GSN40B-40
103	Nail Feeder Seat	1	
104	Nail Feeder Spring	1	
105	Nail Feeder	1	
106	Washer	1	
107	Motor PCB Board Assembly	1	
108	Short Magazine Assembly	1	GSN40B-30
108	Long Magazine Assembly	1	GSN40B-40
109	Hex Bolt M5×6	1	
110	Motor Components	1	
111	Combustion chamber components	1	
112	Wind leaf component	1	
113	Dust shield	1	
114	Casing intermediate pad	1	
501	Charger	1	
501-1	Charger Base	1	
501-2	Adapter	1	
502	Case Assembly	1	
503	Safety Glasses	1	
504	Hex.Bar Wrench M5	2	
505	Oiler	1	